



SureSet™

Dialysis Catheter Securement Device

Instructions for Use

Manufactured for:

Alera Medtech LLC
77 Rowe Street, Suite 2C
Auburndale
MA 02466-1532
USA

Made in India
CDSCO License Number: MFG/MD/2023/001035

To report any quality issues or concerns,
please contact us at:

+1 (888) 70ALERA

+1 (888) 702-5372

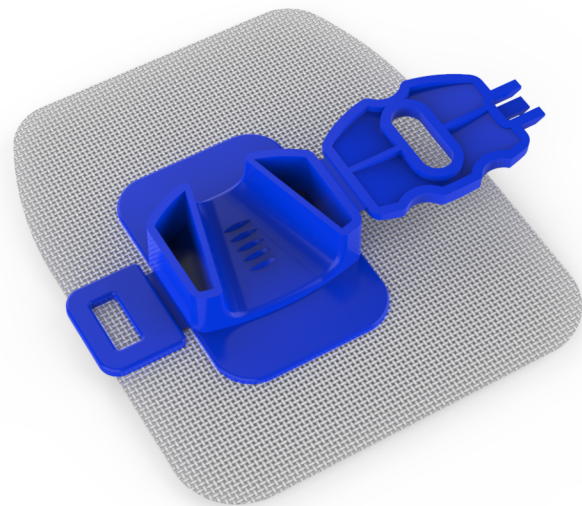
customerservice@alera-medtech.com

www.suresetsecure.com

IMPORTANT: Carefully read and understand all instructions, indications, warnings and precautions and directions for use prior to using the SureSet™ Dialysis catheter Securement device. Failure to do so could result in compromised patient safety, patient complications and/or insufficient treatment.

Trademarks and Copyright

SureSet™ is a trademark of Alera Medtech™
© Alera Medtech, LLC. 2026. All rights reserved.
Patent US 2025/0065034 A1



Visit our
website to
learn more

SureSet™

Dialysis Catheter Securement Device

Intended use The device is intended to secure short term hemodialysis catheters to minimize movement and reduce the risk of accidental dislodgement during dialysis.

Tubing – 12.5Fr to 13.5Fr

Safety considerations

Single use only.

Discard if package is damaged.

Training Alera offers SureSet Dialysis Catheter Securement Device training for users prior to use. Use the QR code on page 1 to view our website for more information.

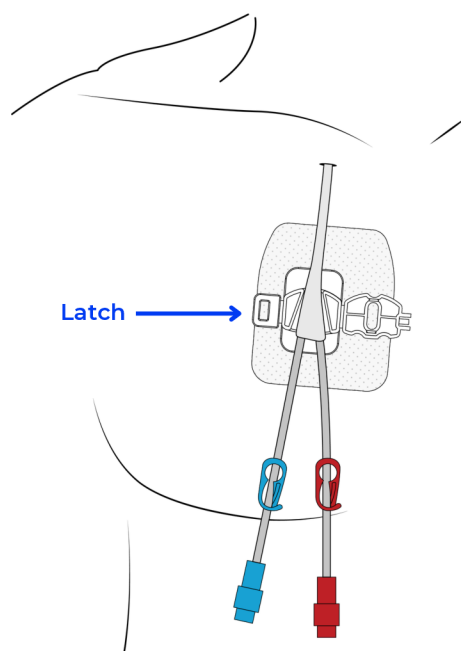
Familiarity with IV procedures

Users should be familiar with IV procedures and techniques for vascular access device care and management.

Key usage points

- Prepare the skin: cleanse skin with antiseptic wipe and allow to dry completely.
- Affix the device as described on page 4.
- To access the IV tubing, place finger under clasp and lift to open the cover of the SureSet device.
- Remove any residue of the dressing pad adhesive with alcohol after removing the device.
- Remove the device as described on page 5.
- Discard after use.

Device overview



This section contains important safety information. Please read and understand all warnings, precautions, and instructions for use prior to using the SureSet Dialysis Catheter Securement Device.

Warnings

- Do not use the device where loss of adhesive could occur, such as non-adherent skin or confused patient.
- Use aseptic technique for application and removal of the device. In case of device loosening or malfunction, the device should be removed and replaced.
- In case of device loosening or malfunction, the device should be removed and replaced.

Precautions

- Read all package insert warnings and instructions prior to use.
- The device and the surrounding area should be routinely inspected.
- Minimize catheter or tubing manipulation during application and removal of the device.
- Remove any oil and moisturizer from the targeted skin area before application.
- Respect infection control guidelines during application and removal of the device, wash hands before use.
- This is a single use device. Do not reuse. If reused, the adhesive may not maintain its performance, causing the device to loosen from the skin.

Incidents should be reported to the manufacturer.

The following symbols may appear in this IFU, on the SureSet device and on the SureSet packaging. Some of the symbols represent standards and compliances associated with the SureSet Dialysis catheter securement Device and its use.



Warning



Keep dry



Quantity



Caution



Single use



Consult instructions for use



Date of Manufacture



Do not use if package is damaged



Manufacturer



Catalog Number

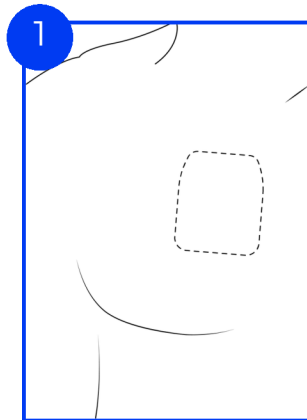


Lot Number

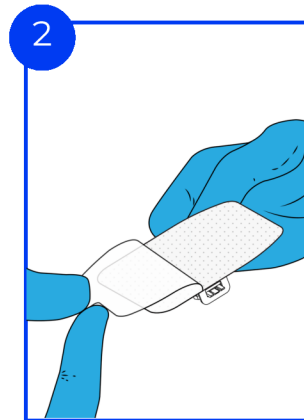


Device is sterile

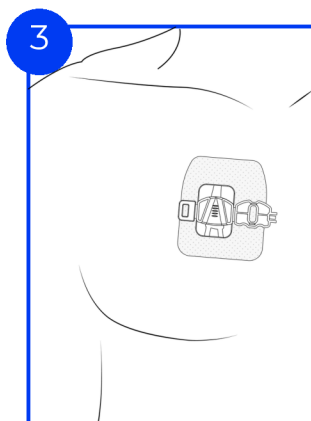
Instructions for Use



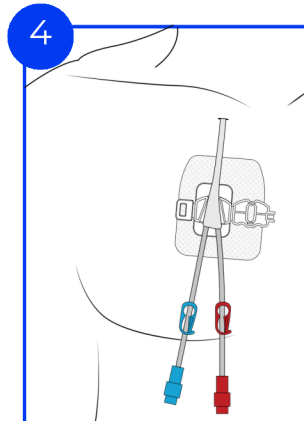
1
Place the protective dressing over the IV catheter hub. Do not cover the Luer connection with the protective dressing.



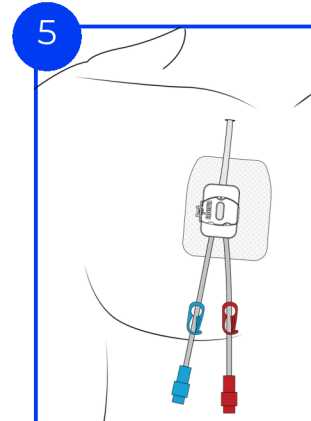
2
Peel off the adhesive cover to reveal adhesive strip on underside of SureSet.



3
Place the device over the protective dressing, ensuring it adheres securely.

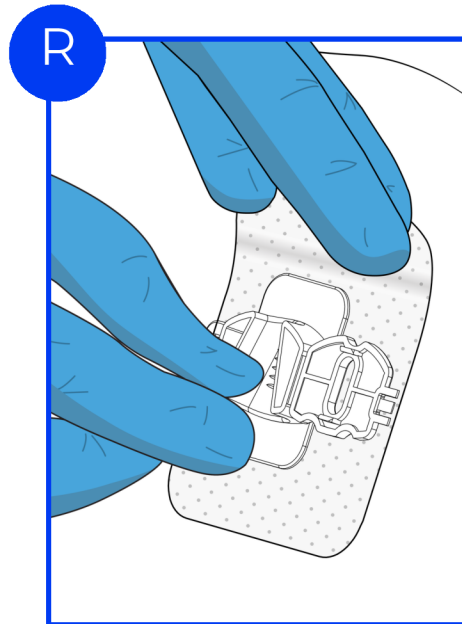


4
Press and secure tubing into the side channel. (supported tubing size – 12.5Fr to 13.5Fr)



5
Close the device cover. Make sure it closes securely.

Device Removal



Device Removal To remove, open the cover, gently remove tubing from the channel. While holding the catheter in place, peel the protective dressing off the skin. The catheter, protective dressing and SureSet device may then be removed in one motion. Dispose of device according to hospital protocol.